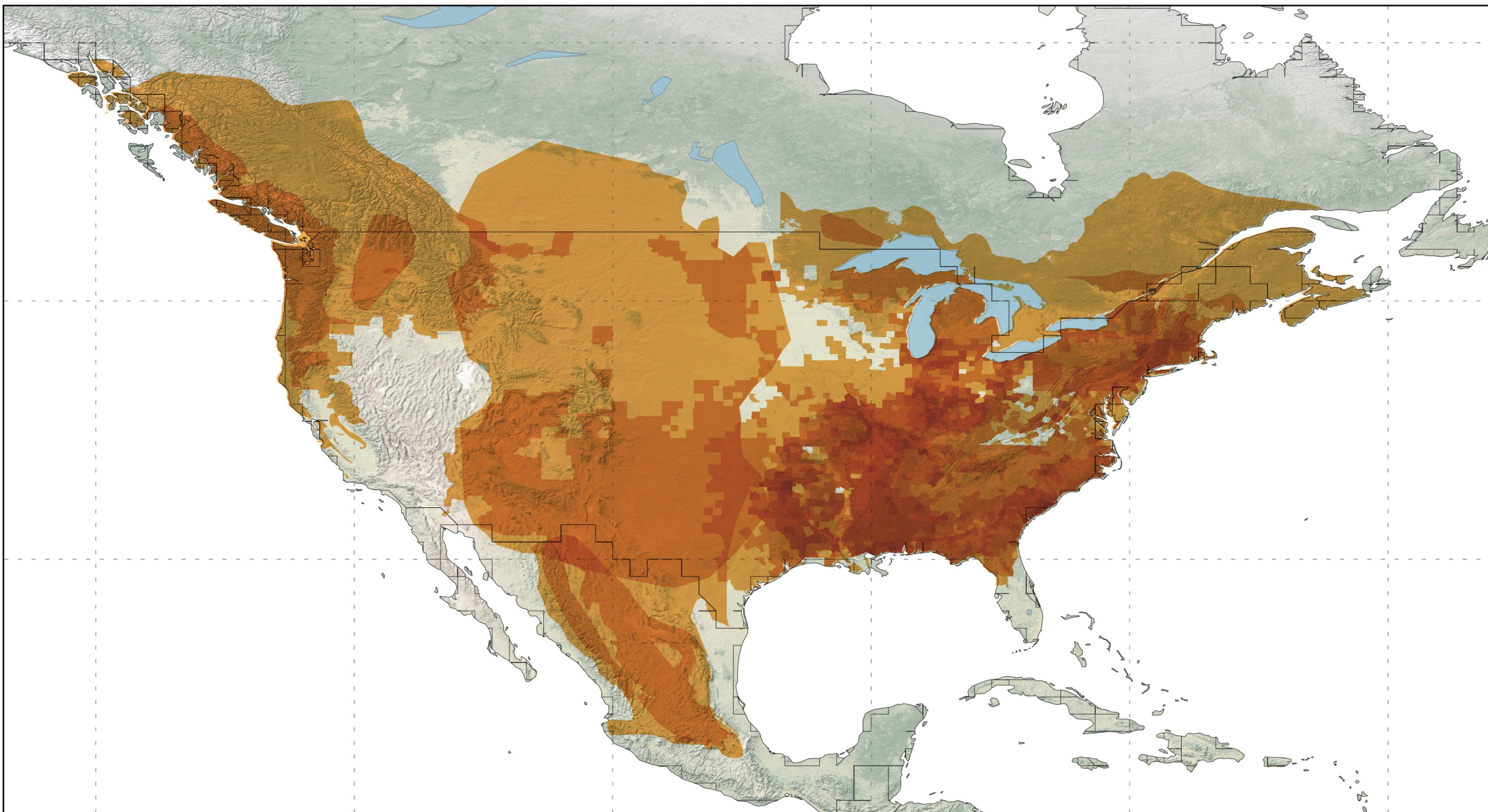


FAMILY AMBYSTOMATIDAE

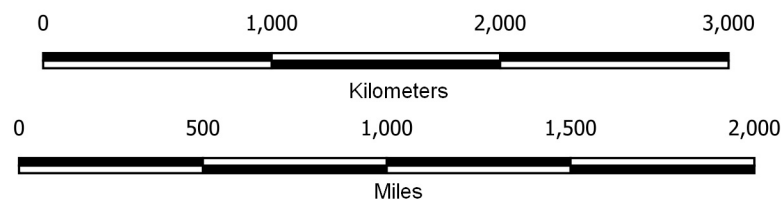


Mapped by AmphibiaWeb,
December 2020

32 species ranges showing, with
overlapping areas increasing in
darkness.

Graticules at 30 degrees on world range,
and 15 degrees on inset.

Projection is WGS84 (EPSG: 4326)
Data Sources: Natural Earth, AmphibiaWeb,
IUCN Red List



*Disclaimer: Species ranges may be missing, incomplete, or inaccurate
and are produced with best available data and thus subject to change.*

